

Safety Bulletin

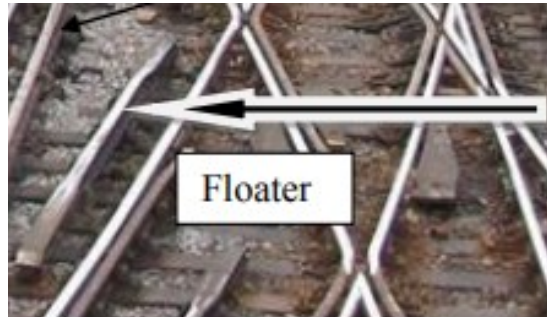
A serious incident has taken place



Serious Safety Incident

Issued to: All South East Route

Date of Issue: 07/0819



Overview

A serious safety incident occurred last night when a colleague setting up site lighting came in to contact with the live conductor rail. The live rail was a floater believed to have been isolated (example of a floater above)*.

The IP suffered severe burns to their hands. However, this could have been a lot worse but the IP was wearing flame retardant PPE and gloves at the time.

The investigation is currently ongoing but we'd like to issue a few immediate reminders.



Never assume equipment is isolated
– always test before touch.

Actions/Discussion Points

- Always assume that the third rail is live and test before touch
- Are you aware of live floaters in your worksites?
- Always wear the correct PPE for the task
- Are you indicating live floaters on site using devices such as self-testing conductor rail indicator devices?

Floaters are short lengths of conductor rail that can abut or infringe an isolation and can remain live because they are fed from an adjacent live conductor rail in a different electrical section.

Part of our group
of Safety Bulletins

Safety
Alert

Safety
Bulletin

Safety
Advice

Shared
Learning



South East Route