

Look out  
for each other  
this winter

*Prep4Winter*



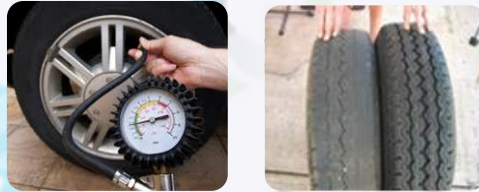
# \*Prep4Winter: Driving

With the temperatures dropping and it starting to become icy on the roads it is even more important to do our pre journey vehicle checks.

One of the things we can do to improve the safety and performance of our vehicles is to check the tyres before we set off on our journey.

## Do your tyres have the right tread depth?

The legal minimum tread depth for tyres in the UK is 1.6 millimetres, across the central  $\frac{3}{4}$  of the tread around the complete circumference of the tyre.



## Are your tyres the right pressure?

Check your vehicle manual for correct tyre pressure.

## Other simple checks you should carry out before every journey

- Do all of your lights, including your fog lamps work properly? Are they clean?
- Are your windscreen wiper blades in good condition?
- Are all of your windows clean?
- Is your screen wash topped up adequately?
- Do you have enough de-icer?
- Always remember the Life Saving Rules



# \*Prep4Winter: Driving in adverse weather conditions

## **Aquaplaning**

- Reduce your speed to prevent aquaplaning
- If you aquaplane ease off the accelerator and brakes until your speed drops so the tyres make contact with the road again.

## **Strong Winds**

- Keep both hands on the steering wheel
- Expect sudden gusts of wind, especially when passing high-sided vehicles and when exiting from tunnels.
- Plan a route that avoids driving over bridges

## **Heavy Rain**

- You need twice your normal braking distance.
- Check your windscreen wipers
- Plan your movement ahead on the road

## **Fog**

- Check your lights
- Keep your speed down and leave a good distance between you and the vehicle in front



## **Snow and Ice**

- Reduce your speed (the limit is not an objective)
- Braking distance is 10 times more than normal leave a big gap
- Avoid harsh braking, acceleration and sharp steering.
- Slow down in plenty of time before bends and corners.
- use a low gear earlier to assist braking, brake gently.
- Keep your vehicle well-ventilated. Heaters cause drowsiness.

## \*Prep4Winter: Ecology



Between late October and early April (depending on weather conditions) a number of wildlife species will enter into hibernation and become more vulnerable to construction activities. Disturbing them is an offence as it will significantly reduce their ability to survive over winter.

- Presence/absence surveys are no longer possible for hibernating species.
- While the track is not considered to be a core habitat for species, they may aim to hibernate in troughing routes and catch pits.
- Always avoid disturbance of hibernating species.

***If you have any queries please contact your Environment Manager***

## \*Prep4Winter: Materials & Waste storage

**Materials** – Keep materials away from wet ground by storing on pallets and covering with hessian or tarpaulin to prevent damage to new materials.

**Waste storage** – Where possible, make sure skips are enclosed to prevent rainwater and snow in the skips.

**Fuels and Oils** – store fuels and oils on bunds which are covered to reduce the risk of bunds flooding.

**Drip Trays** – Drip trays can filled with contaminated rainwater, making it more expensive to remove, use spill nappies or absorbents to remove contamination.

**Excess rainwater run-off** – Use barriers and absorbent booms to protect watercourses and drainage channels



# \*Prep4Winter: Ballast Anti-ice Treatment

As the weather is starting to turn and a cold spell is approaching, it's a good time to think about Prep4Winter and the Anti-Ice treatment

Anti-Ice is effective for up to **5 days** after initial application but **potentially harmful** to the environment for up to **28 days**. If wagons are not fully offloaded they can only be used on sites that have had their environment assessment form completed and accepted, therefore it is vital to complete the environment assessment forms to retain the full availability of the wagon fleet. Without completing these forms works may be put at risk.

For more information see the [Anti-Ice Treatment Process](#)

**All possession trains containing Autohoppers trains from**

**1<sup>st</sup> November – 31<sup>st</sup> March** are required to fill out the [Environmental Assessment Form](#) and submit completed forms to

[RSenvironment@networkrail.co.uk](mailto:RSenvironment@networkrail.co.uk) by no later than

**T-7 weeks**

Use the GRIP4Track Environmental Workbook to identify the environmental risks associated with the area such as;

Site Risk	Example of site risk
Protected sites	SSSI (Site of Special Scientific Interest)
Surface Water	Ponds, stream, river, ditches close by
Network Rail drainage	ditches or track drains on site
Poor drainage	wet marshy areas on site
Local water pollution	evidence of surface run-off from site to local watercourses (silt runoff, oil/chemical runoff)
Ecology (flora & fauna)	presence of vegetation/habitat types; Acid Grassland, Heather, Marsh or waterside plants Great Crested Newts (any ponds within 250m)
Landscape	Cutting, Embankment, Open/Flat